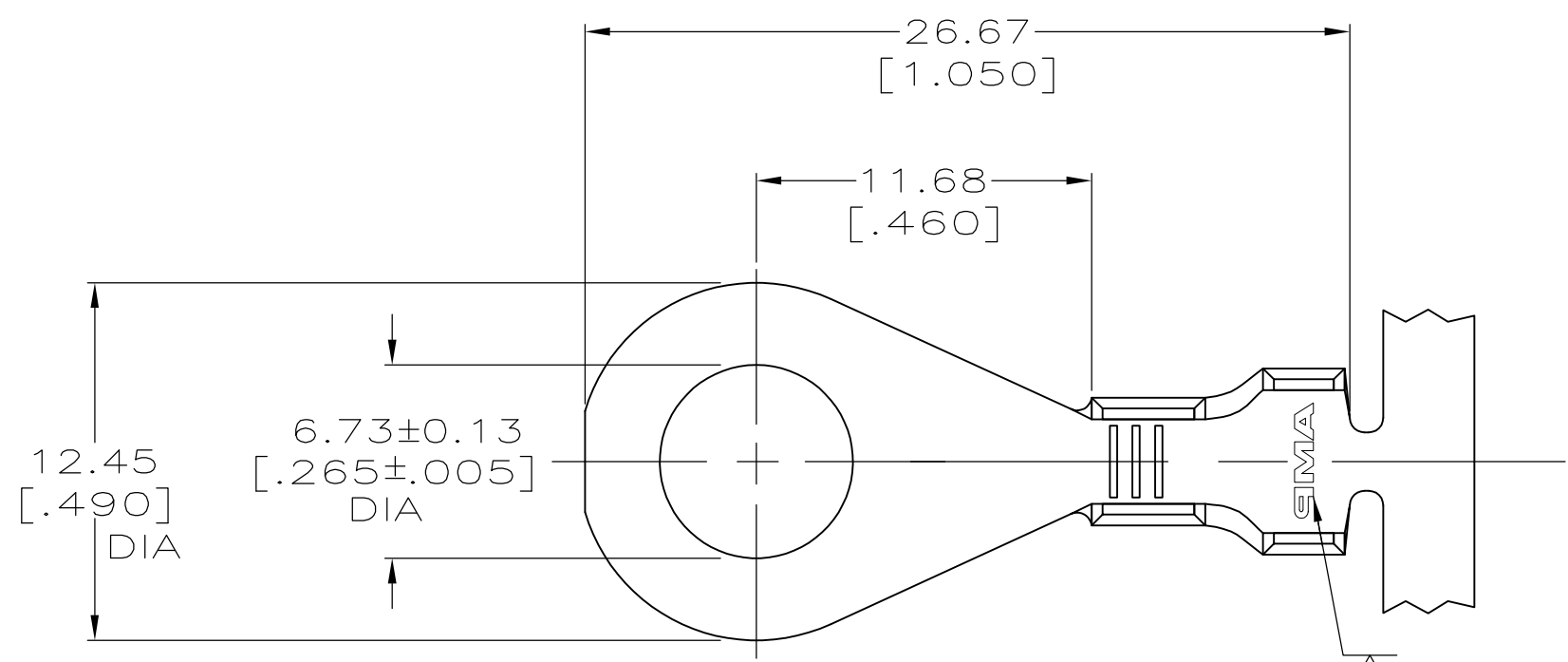
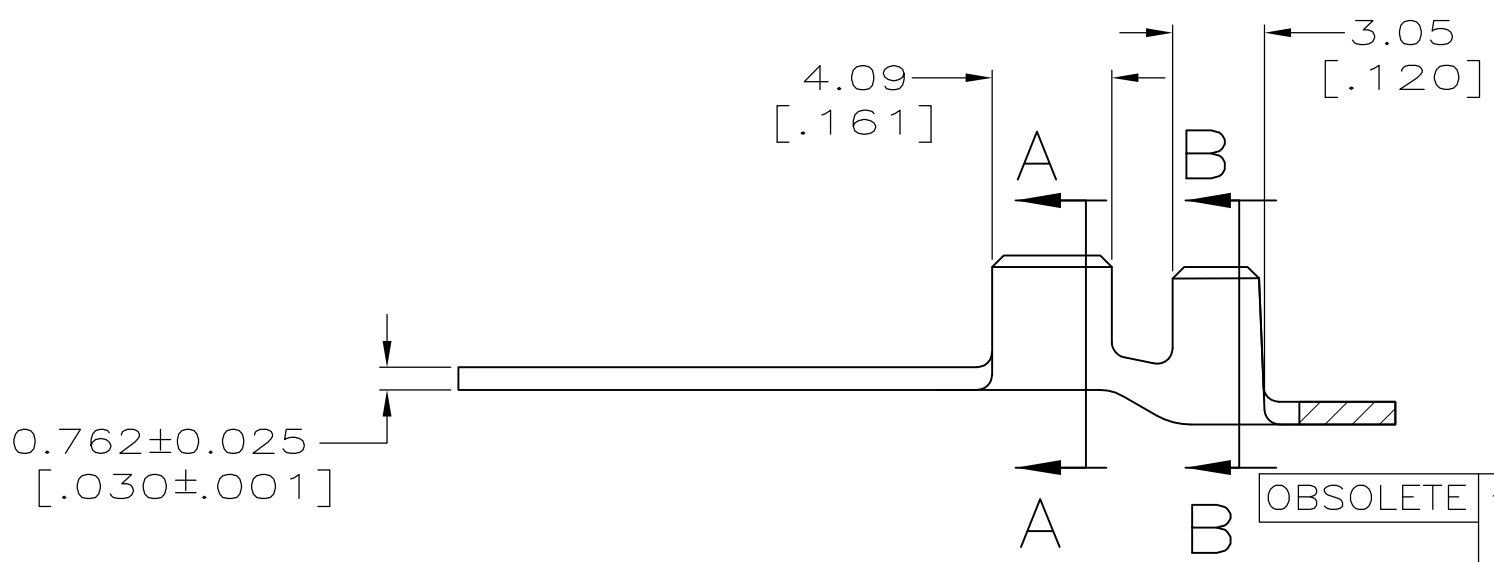
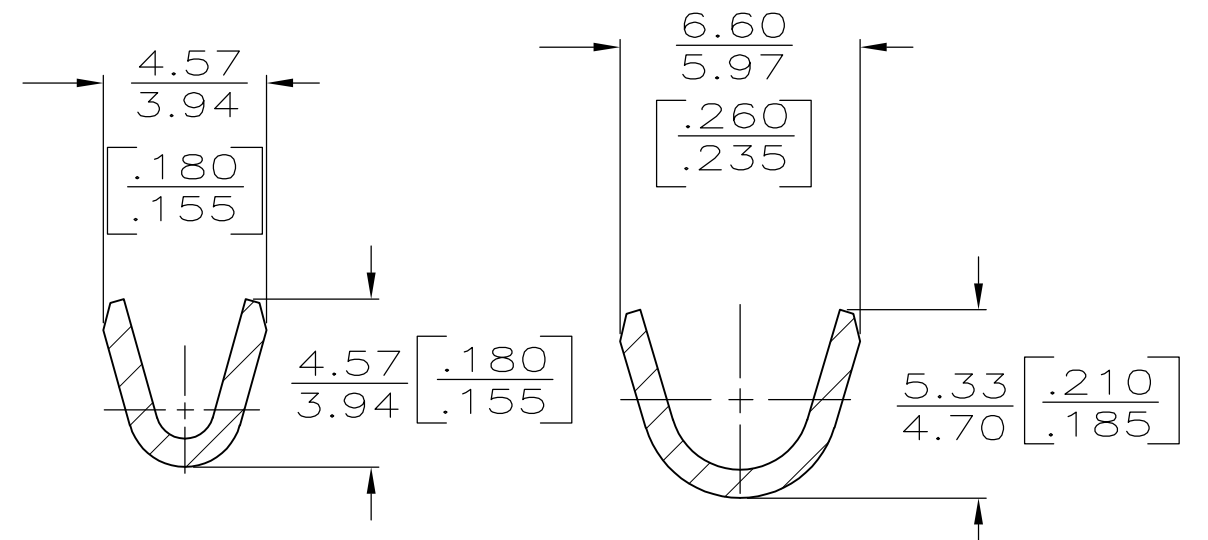


THIS DRAWING IS UNPUBLISHED. RELEASED FOR PUBLICATION
 © COPYRIGHT - By - ALL RIGHTS RESERVED.

LOC	DIST	REVISIONS			
P	LTR	DESCRIPTION	DATE	DWN	APVD
AF	50	J2	REVISED PER ECR-11-009335	09AUG1	JR PD



- 1 CONTINUOUS STRIP ON REEL.
- △2 INSULATION RANGE:
2.03-2.92 [.080-.115] F CRIMP
2.92-3.81 [.115-.150] O CRIMP.
- △3 STAMPING:
AMP FOR PART NO 61867-2
AMP* FOR PART NO 61867-3.



SECTION A-A
SCALE 5:1

SECTION B-B
SCALE 5:1

INSULATION RANGE	△2 [18-14] AWG	MATERIAL	H02 PHOS BRZ 082 BRASS	PART NO	61867-3 61867-2
------------------	----------------	----------	---------------------------	---------	--------------------

THIS DRAWING IS A CONTROLLED DOCUMENT.		DWN 2/16/94 PHILLIP M FORTNEY	STE TE Connectivity		
DIMENSIONS: INCHES		CHK 2/16/94 JEFF RUTH			
TOLERANCES UNLESS OTHERWISE SPECIFIED:		APVD 2/16/94 GARY YETTER	NAME		
0 PLC ± -		PRODUCT SPEC 2/16/94 RON KUZO	RING		
1 PLC ± -		APPLICATION SPEC	RESTRICTED TO		
2 PLC ± 0.25 [.010]		WEIGHT -	SIZE	CAGE CODE	DRAWING NO
3 PLC ± -		SEE TABLE	A3 00779		C-61867
4 PLC ± -			CUSTOMER DRAWING		SCALE 4:1
ANGLES ± -		FINISH TIN PLATE		REV J2	